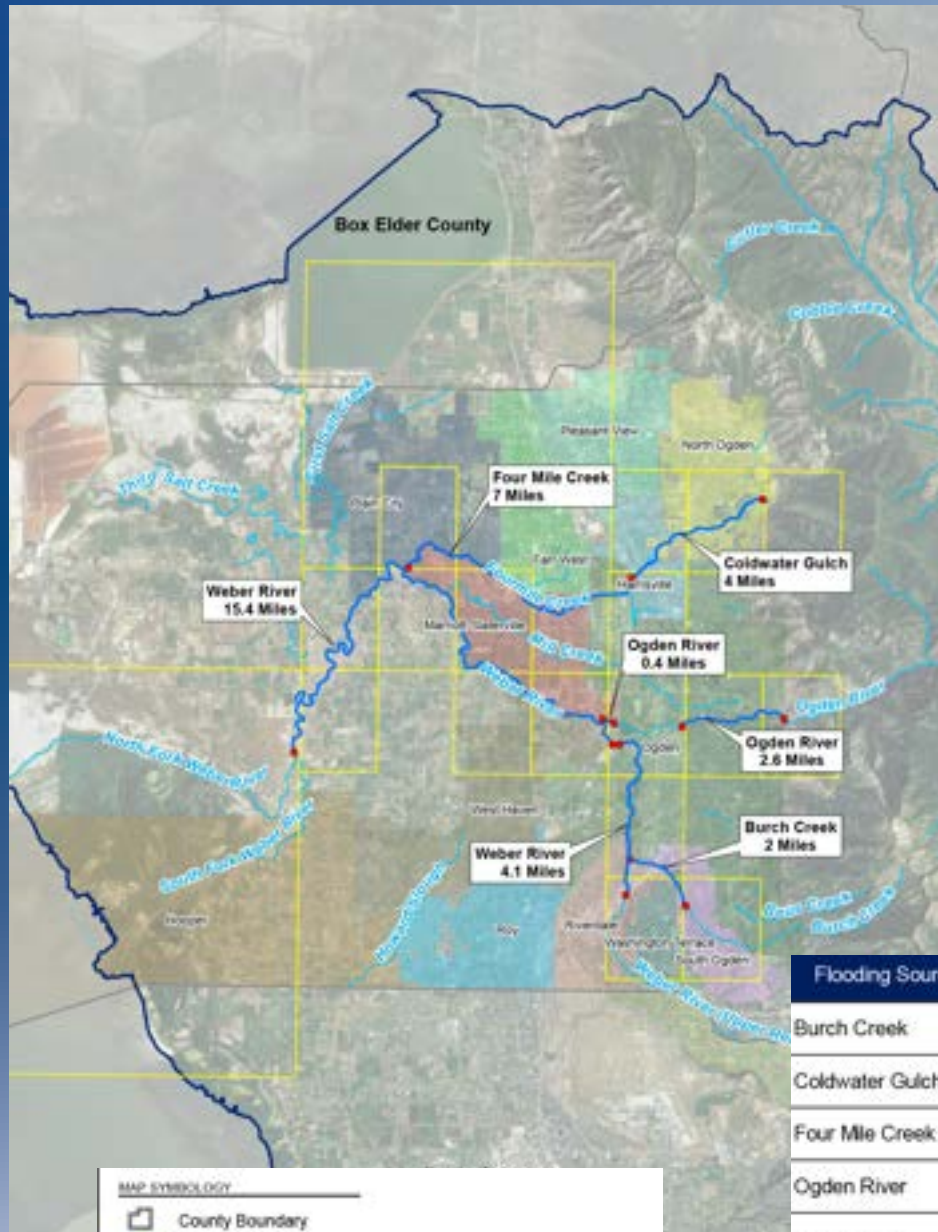


Lower Weber Watershed Risk MAP Project

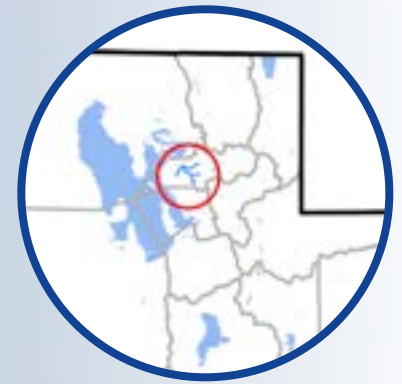
Weber County, UT Flood Study Update, Zone AE, May 18, 2021



On April 21, 2021, the Federal Emergency Management Agency (FEMA) in coordination with the State of Utah Division of Emergency Management (DEM) and your local community officials, released revised preliminary Flood Insurance Rate Maps for parts of Weber County. These maps are currently available for public review and comment. Once effective, the new maps will be used for floodplain management and determining flood insurance ratings.

Flood risk can--and does--change over time for many reasons, including land development, erosion, increasing storm intensity, wildfires, and other causes. As a result, FEMA is using the newest technologies to update flood maps across the country. The new maps will help Utah property owners better understand their flood risk so they can take steps to protect their community, business, or home.

Flooding Source	Reach Length	Reach Limits
Burch Creek	2	From 4600 South downstream to the Weber River
Coldwater Gulch	4	From Mountain Road downstream to Four Mile Creek
Four Mile Creek	7	From confluence with Coldwater Gulch to confluence with Weber River
Ogden River	2.6	from the Eastern limits of Ogden City downstream to Kiesel Ave.
Ogden River	0.4	from the Eastern Limits of Marriott-Slaterville downstream to confluence with Weber River
Weber River	15.4	From Western limits of Ogden City downstream to divergence of South Fork Weber River
Weber River	4.1	From Riverdale Rd downstream to Western limits of Ogden City



April 21, 2021
**Preliminary
Maps Released**

May 18, 2021
CCO Meeting

Fall 2021
**90-day Appeal &
Comment Period**

*Spring 2022
**Letter of Final
Determination**

**6-month Adop-
tion Period**

*Late fall/early winter
2022
Effective Issuance

*Dates are subject to change



FEMA